



19



20



21



22



31



32



33

- Trillium offers remarkable spaciousness in a small package.
- Color co-ordinated drapes. Cushions have removable zippered covers. Generous-sized dining area.
- Large dining table converts to cocktail size table for after dinner use.
- Dining area converts to full size double bed.
- Optional swing down double bed provides additional sleeping area and swings neatly away when not in use.
- Front-end bunks provide comfortable adult-size sleeping area and convert to a spacious gauchio seating area by day.
- Gauchio seating area.
- Guard rail, standard in some models, secures top bunk occupant and is easily affixed and removed.
- Self contained, easy-to-maintain portable toilet fits neatly into its own compartment below the gauchio when not in use.
- Large 30" x 6'5" washroom model with vanity is an alternative to the gauchio model. Folding doors offer complete privacy.
- When not required, folding doors close off toilet and a fold-down love seat provides additional seating. Love seat also converts to pop-up counter of similar size (not shown).
- Washroom model provides a brightly lit vanity that may be enjoyed with privacy doors in open or closed position.
- Trillium's storage concept makes every space workable. It offers a closet for hanging garments as well as open and closed shelf space.
- A handy catch-all tucks away those little loose things you forget about and keeps them secure while travelling.
- Drawers appear everywhere - even in unlikely places. The cutlery drawer built into the dining/cocktail table stays within reach in either position. Carpets are easily removed for shaking out sand.
- Large built-in food preparation area with stainless steel sink.
- Three built-in 'easy-to-use' cupboards.
- Stainless steel water tap with separate hot and cold water.
- Three-volt, 11-watt automatic early start comfort.

Some of the equipment shown or mentioned is optional at extra cost.



25



26



27



28



34



35



36

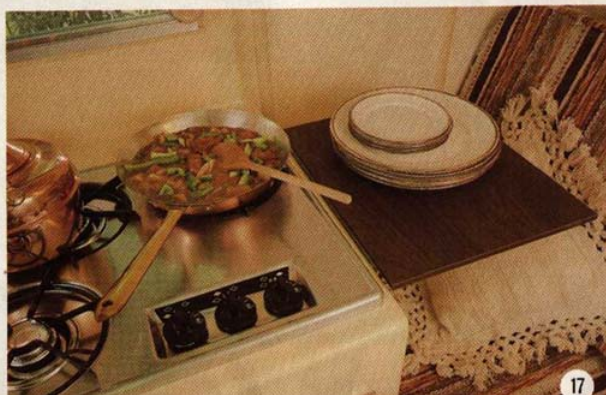
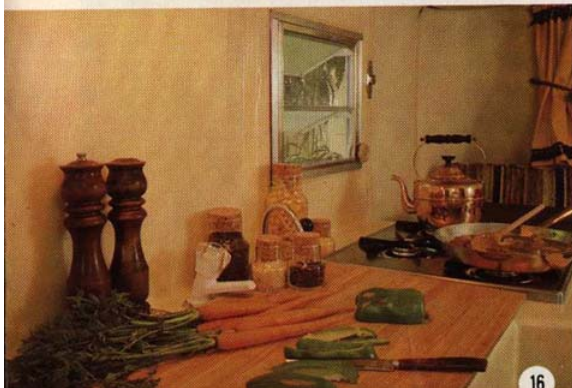
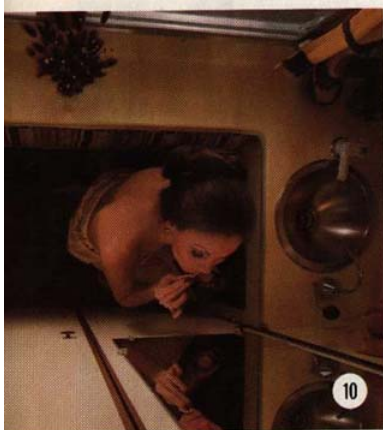
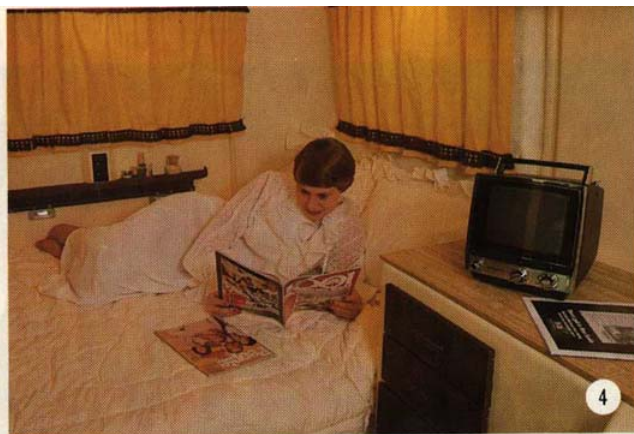


- Optional air conditioner makes travelling in southern areas truly comfortable. Compliments Trillium's clean aerodynamic exterior styling. Large roof vent is standard on all models.
- Optional rubber gravel shield protects the finish. Optional propane tank cover enhances your Trillium.
- Front window guard opens to provide awning over louvered window.
- All windows open to provide cross ventilation.
- Rear window doubles as escape hatch.
- All windows are equipped with removable screens and may be fitted with optional storm windows.

- 27. A soft, safe ride is assured through independent torsion bar suspension.
- 28. Easy-to-maintain wheel wells are part of the body mold. Nothing to corrode or shake loose. Electric trailer brakes, as shown above, are standard on some models.
- 29. Vinyl wheel cover protects the spare. Easy....Clean....Accessible. Gives your Trillium a 'finished' look.
- 30. Deluxe, full wheel discs add a sporty look to give your Trillium a more luxurious appearance.
- 31. Add-a-room walls with three large screened windows zip onto awning and add plenty of extra living space.

- 32. Colorful vinyl awning gives relaxing shade from the hot summer sun. Provides framework and roof for the Add-a-room option (31).
- 33. Self supporting automatic roll-up awning is stored on trailer. Adjustable poles secure awning in open position. Free of upright supporting poles.
- 34. Modern reinforced fiberglass techniques are used in Trillium manufacturing. Color is chemically bonded gelcoat paint molded in for enduring beauty without maintenance.
- 35. Trillium trailers are carefully inspected by the quality control department prior to shipping.

- 36. Trilliums a plant in M across Can
- 37. The home 60,000 squ facilities lo the outskir Trillium In CSA and R electrical r stipulation soundness the "Seal o the side of Let it be yo quality pro



trillium 1300

DIMENSIONS - overall length: approx. 13'. width: under 80". interior headroom: approx. 6'2". weight: approx. 1,050 lbs. with ice box. wheel track: approx. 65". overall height: approx. 7'4".

BEDROOM - extra long double bed approx. 6'5" x 47". extra long bunk beds approx. 6'5" x 27". optional swing-down bed approx. 6'2" x 38".

PLUMBING - 10 gallon fresh water tank and pump. separate city water intake and faucet.

trillium 4500

DIMENSIONS - overall length: approx. 15'. width: under 80". interior headroom: approx. 6'2". weight: approx. 1,295 lbs. with ice box. wheel track: approx. 68". overall height: approx. 7'4".

BEDROOM - extra long double bed approx. 6'5" x 53". extra long bunk beds approx. 6'5" x 30". optional swing-down double bed approx. 6'2" x 42".

PLUMBING - 12 gallon fresh water tank and pump. separate city water intake and faucet.



EXTERIOR - clean styling. protective body molding. flush mounted door lock. roof vent. large louvered windows with escape hatch on rear window. all windows open. corrosion-proof screens. front window guard.

FINISH - permanent gelcoat color is molded in for enduring beauty with minimum maintenance.

CONSTRUCTION - the combination of strength and low weight is accomplished through utilizing interior fiberglass furniture as structural members. bonding the furniture to the body achieves a unitized structure of great durability.

INSULATION - attractive vinyl wall covering backed with rubber foam is soft to touch, easy to clean and provides good insulation.

CHASSIS AND RUNNING GEAR - 2" x 3" welded tubular steel frame. maintenance-free rubber-ride torsion bar suspension. A78-13 whitewall tires.

INTERIOR - furniture made of maintenance-free fiberglass. removable, zippered cushions color co-ordinated to match drapes with tie-backs.

KITCHEN - LP gas range, 3-way refrigerator, stainless steel sink with butcher block cover, ventilating window over stove and 20 lb. propane tank.

SELF-CONTAINED TOILET MODEL - toilet with holding tank. wash basin with make-up area. folding door partition for privacy. hide-a-way love seat.

ELECTRICAL SYSTEM - 12 volt lighting throughout. two 110 volt duplex outlets. power converter, in most models, to transform 110 volt into 12 volt power with built-in 15 amp. reset breaker. 25' power cord.

OPTIONAL EQUIPMENT - vinyl awning and add-a-room. inquire at your dealer for additional options.

Trillium Industries conducts an extensive and continuing product improvement, research and testing program, and thus reserves the right to change specifications and prices at the factory without notice.



TRILLIUM INDUSTRIES

Trillium Recreational Vehicles Ltd., 25 Heritage Road, Markham, Ontario, Canada L3P 1M3 (416) 294-4992



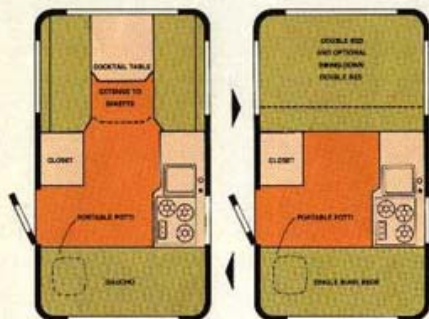
YOUR TRILLIUM DEALER:
— TRAILER CENTRE —

Owned & Operated by
DORCHESTER MOBILE HOMES ESTATES LTD.
R.R. 1, LONDON, ONTARIO

SALES - SERVICE - PARTS
(519) 652-3316 — (519) 652-5661

Trilliums are manufactured to the building codes of all Provinces and States in Canada and U.S.A. and carry their respective approval seals which are required to offer Recreational Vehicles for sale.

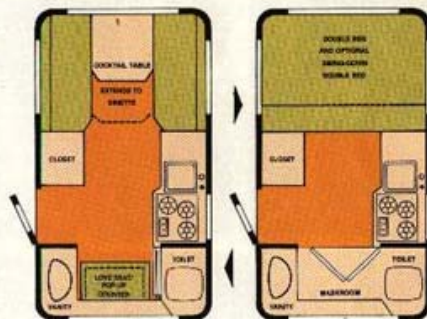
DAY CONVERTS TO NIGHT



4500 FRONT GAUCHO PLAN

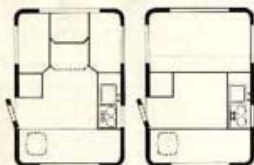
- Dinette and optional swing-down bed. Both convert to double beds.
- The gauchos are transformed into bunk beds by raising the back cushion.
- The portable potti, standard in most models, hides away in a special locker.

DAY CONVERTS TO NIGHT



4500 WASHROOM PLAN

- Dinette and optional swing-down bed. Both convert to double beds.
- Love seat/pop-up counter combination folds away to provide additional floor space or large washroom.
- Privacy is attained by a folding door which closes off washroom.



1300 FRONT GAUCHO PLAN

Both 4500 plans shown are also available in the 1300 model with slight modifications in dimensions and detail. The Trillium 1300 has enjoyed years of success in Canada and the United States and now shares the limelight with its big sister the Trillium 4500.

1300 WASH- ROOM PLAN

