



SERVICE

United States

SALES OFFICES
DOMETIC SALES CORP.
2320 Industrial Pkwy.
Elkhart, IN 46515
Phone 219-295-5228

DOMETIC SALES CORP.
14441 Bonelli St.
City of Industry, CA 91746
Phone 818-968-9431

DOMETIC SALES CORP.
1625-A Rock Mountain Blvd.
Stone Mountain, GA 30083
Phone 404-493-6214

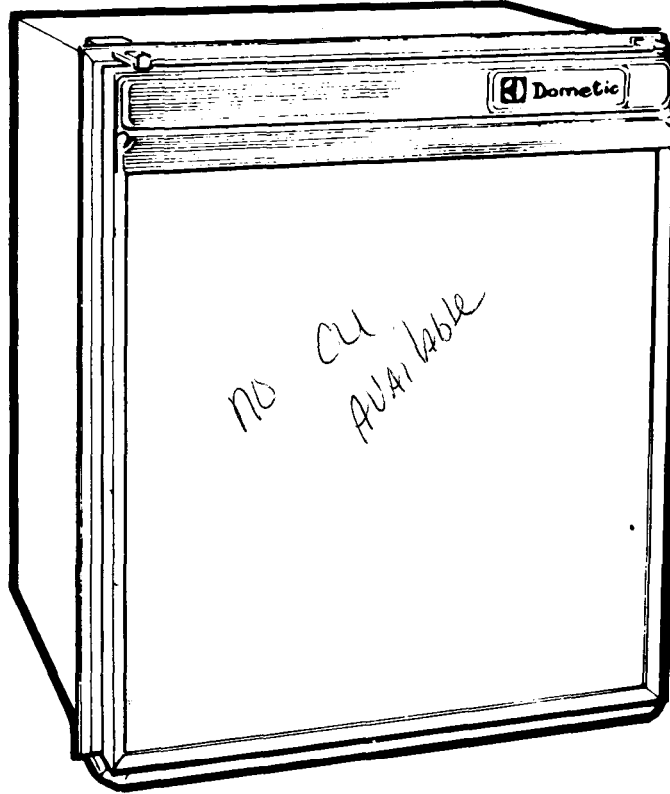
DOMETIC SALES CORP.
7695 S.W. Hunziker Rd.
Portland, OR 97223
Phone 503-620-9510

DOMETIC SALES CORP.
2920 Avenue "E" East
Arlington, TX 76011
Phone 617-277-7211

DOMETIC SALES CORP.
East Oak Ridge Dr.
Rt. 9, Box 17 A
Hagerstown, MD 21740
Phone 301-797-0826

Canada

Euroclean Canada Inc.
Dometic Recreation Division
866 Langs Drive
Cambridge, Ontario
N3H 2N7 Canada
(519) 653-8880



Product Numbers :

9266050 - RM211
9266054 - RM211B

REFRIGERATORS
for trailer installation

Models
RM211
RM211B

SPARE PARTS LIST

Edition 2

Revised May 1982
FPC 110 RM211B

© **Dometic**
DSC#403

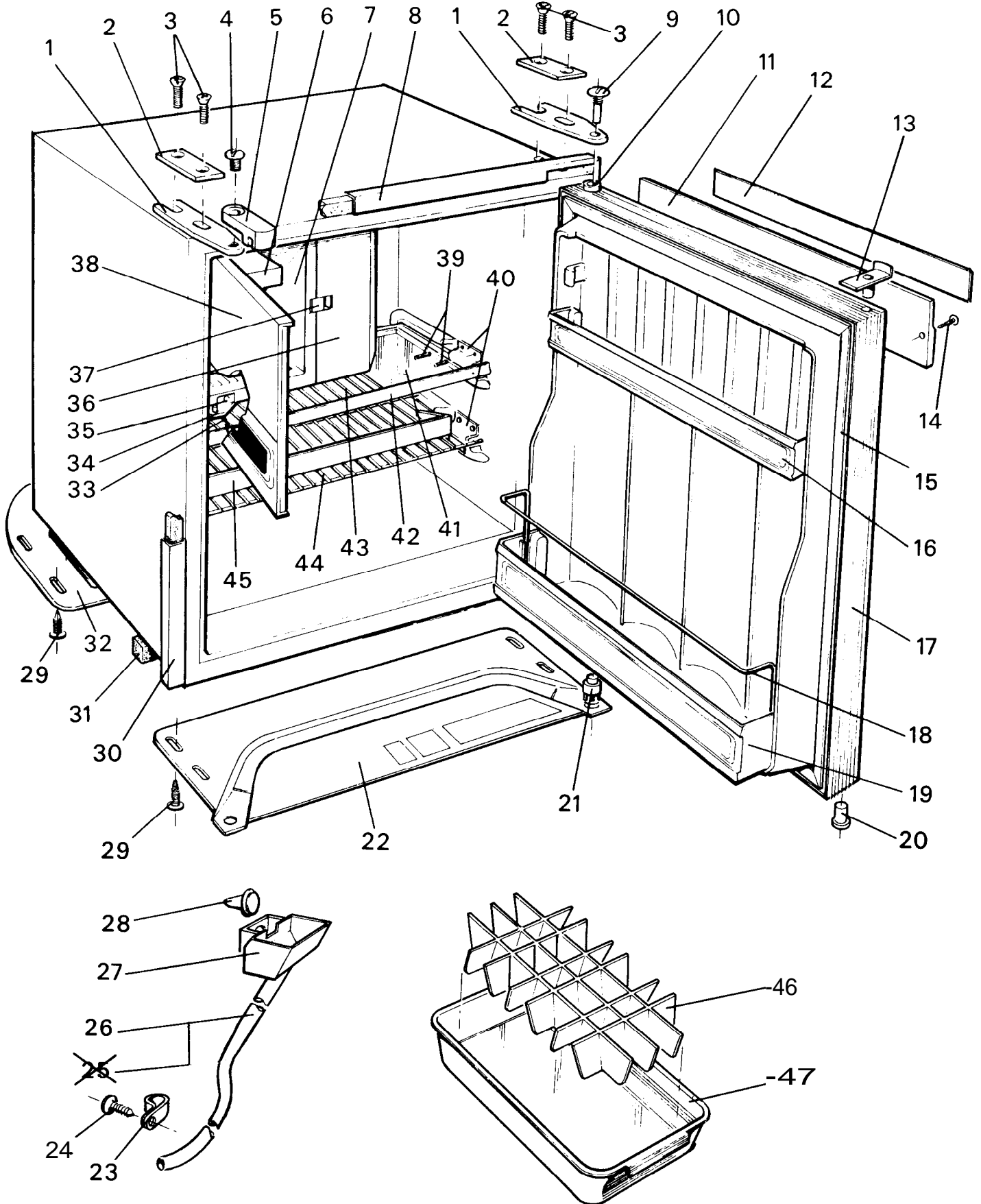
When ordering spare parts always state:

MODE- QUANTITY- PART NUMBER- DESCRIPTION

For electric details also:

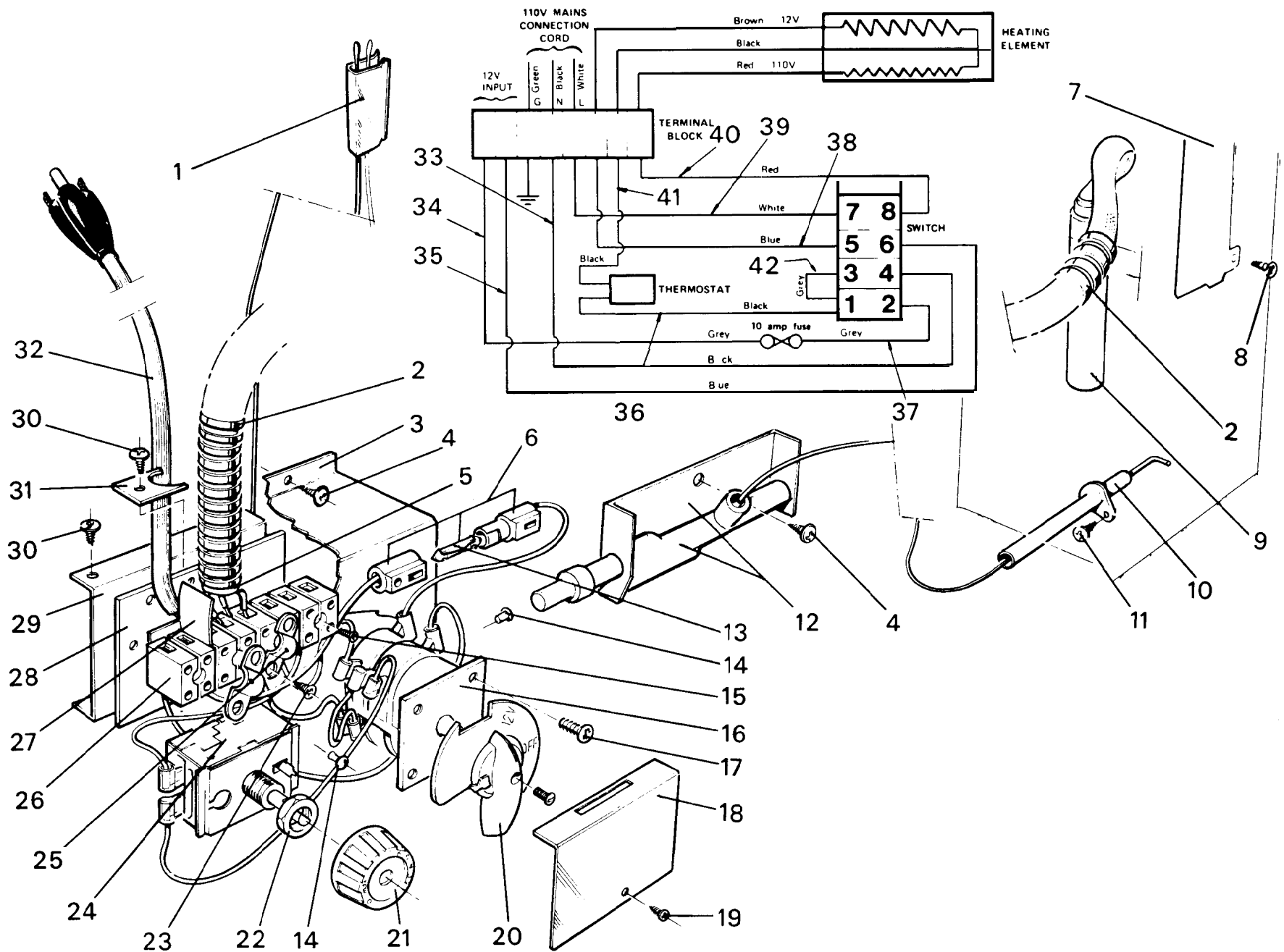
VOLTAGE- WATTAGE

RM211, RM211B
CABINET PARTS



CABINET PARTS

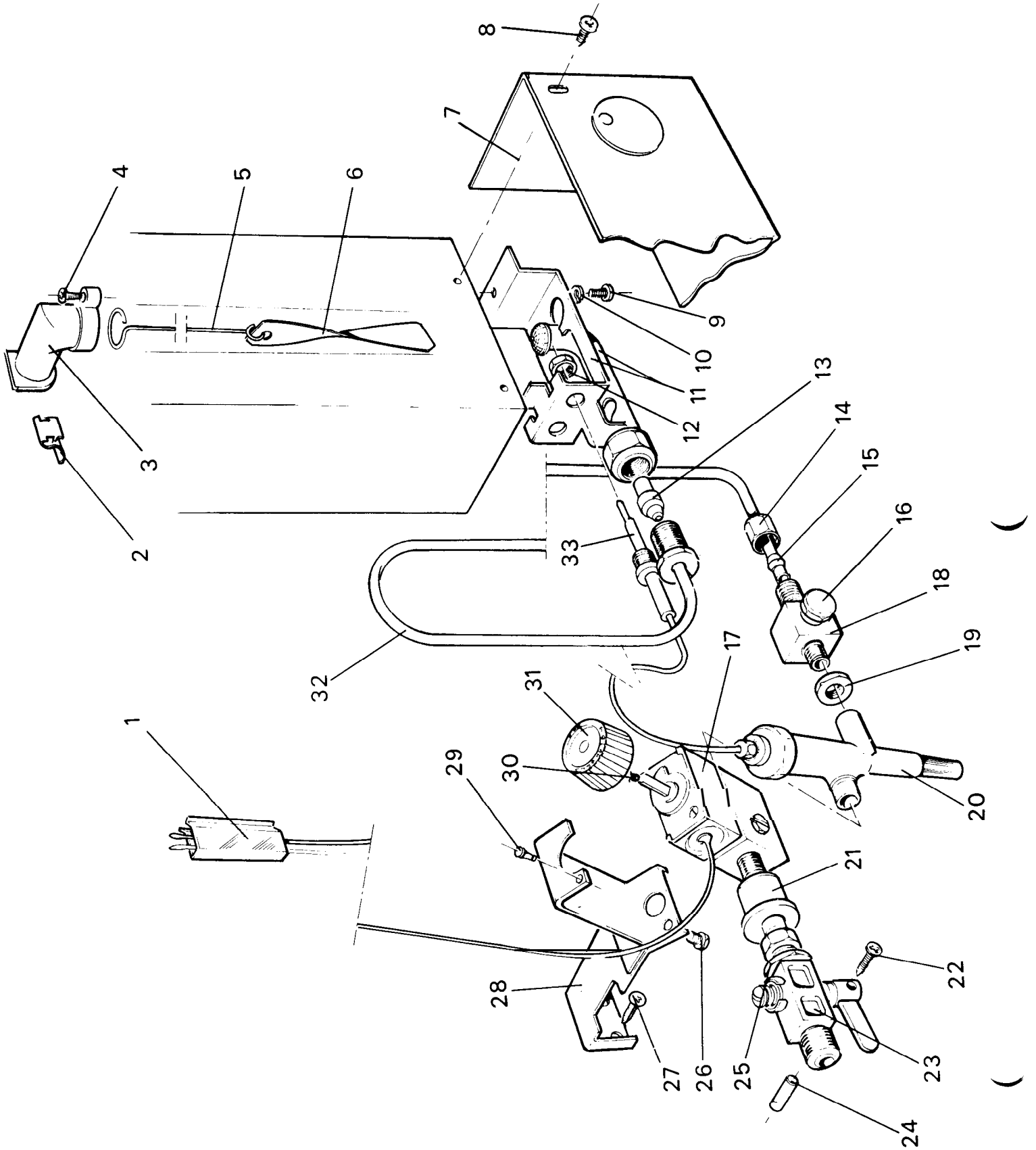
Item No.	RM211	RM211B	Part No.	Description
1	X	x	2901572-01/0	Blade for Upper HInge and Travel Catch
2	X	x	2901952-00/0	Clamping Plate
3	X		343148-00/3	Screw, M4 x 18
		x	341733-00/4	Screw, Rd. Hd., 5/8" No.6
4	X	x	290161500/0	Screw, M6,for Travel Catch
5	X		2901566-00/0	Travel Catch (Plastic part only)
		x	2903194-00/3	Travel Catch (Plastic part only)
6	X	x	2901636-00/7	Shelf for Evaporator
7	X	x	2901685-00/4	Cold chamber (less door)
8	X	x	2901232-00/5	Sealing channel, top section
9	X	x	2901570-00/0	Upper Hinge Pin Screw, M6
10	X	x	2901617-00/0	Hinge Bearing, Upper
11	X	x	2901479-01/0	Nameplate Strip, only
12	X	x	2901504-02/0	Decoration for nameplate strip
13	X		2901616-00/0	Stop for Travel Catch
		x	2902631-00/7	Stop for Travel Catch 3
14	X	x	293105-01/1	Screw, No.4 x 16mm, for nameplate strip
15	X	x	2900733-00/3	Replacement Door Gasket Set
16	X	x	2900608-08/0	Door Shelf, Upper
17	X		2901699-02/0	Door Complete, less door shelves and front panel
		x	2903073-02/5	Door Complete, less door shelves and front panel
18	X	x	2900963-00/0	Bottle Retainer (wire) for lower door shelf
19	X		2900607-04/0	Door Shelf, Lower (less item 18)
		x	2900607-06/6	Door Shelf, Lower (less item 18)
20	X	x	2900348-00/0	Hinge Bearing, Lower
21	X	x	2900352-00/2	Lower Hinge Pin
22	X	x	2901270-02/1	Front Foot Plate
23	X	x	2901869-00/4	'P' Clip for item 25
24	X	x	273133-00/9	Screw, 5/16" No.6
25			2901705-00/0	Drip Outlet for defrost water (no longer used, - see item 26)
26	X	x	2901762-02/7	Drain Tube for defrost water (one-piece type)
27	X	x	2901702-00/7	Drip Collector for defrost water
28	X	x	2901763-00/9	Plastic Fix for drip channel
29	X		341624-00/5	Screw, Pozidriv, M4 x 8
		x	291419-00/0	Screw, 3/8" No.6
30	X	x	2901231-00/7	Sealing Channel, right-hand side
	X	x	2901231-01/5	Sealing Channel, left-hand side
31	X	x	2901230-02/5	Sealing Strip, bottom front
32	X	x	2901272-01/9	Rear Foot Plate
33	X	x	2901668-00/0	Gasket for cold chamber door
34	X	x	2901580-00/0	Lower Hinge for cold chamber door
35	X	x	342257-02/9	Truss head rivet for lower hinge of cold chamber door
36	X	x	2901578-00/0	Side Cover for evaporator fins
37	X	x	2901670-00/0	Catch for cold chamber door
38	X	x	2901581-01/0	Door Only.for cold chamber
39	X	x	2001281-00/1	Lock Pin for item 40
40	X	x	2002624-00/1	Shelf Retainer
41	X	x	2901439-00/0	Plastic Tray for upper shelf
42	X	x	2901796-00/0	Facing Strip for upper cabinet shelf
43	X	x	2901174-04/1	Upper Shelf, complete with facing strip (less tray)
44	X	x	2901170-00/7	Lower Shelf, only
45	X	x	2901521-00/0	Sliding Bar (Plastic) for lower cabinet shelf
46	X	x	2901713-00/0	Divider for ice-tray
47	X	x	2901681-00/0	Ice Tray only



ELECTRIC EQUIPMENT

item No.	Part No.	Description
1	2901604-00/5	Clamp for thermostat capillary end
2	2901606-00/6	Armoured Sleeve
3	2901829-00/8	Housing (less cover) for terminal block
4	273133-00/9	Screw, Rec. Rd. Hd., 5/8" No.6
5	2901861-00/1	P.V.C. Insert for armoured sleeve
6	2901844-00/0	Fuse Holder complete with 10 amp fuse.
7	2900644-00/2	Shutter for boiler casing
8	290583-00/4	Screw, Pz. Pan Hd., 1/4" No.4, for shutter
9	2901943-00/0	Heater 12/1 10 volts, 95 watts, type 178
10	2901788-02/0	Electrode with lead
11	290583-00/4	Screw, Rec. Rd. Hd., 1/4" No.4
12	2901181-01/0	Piezo Ignitor (less item 10)
13	343804-00/1	Fuse.10 amp
14	292611-00/1	Indicator for thermostat settings
15	29310500/3	Screw, Rd. Hd., 5/8" No.4
16	2002586-00/2	Switch only
17	291072-00/7	Screw, 3/8" No.10, for switch
18	2901740-00/7	Cover for terminal block housing
19	158130-00/5	Screw, 1/4" No.4, for item 18
20	2002582-00/4	Switch Knob with dial
21	2901183-01/8	Thermostat Knob complete with clip
22	2900705-00/1	Hex. Nut, MIO, for thermostat
23	7295277-01/1	Screw, Pan Hd., 5/16" No.6, for saddle clip
24	2902595-00/4	Electric Thermostat, Ranco type K50
25	271019-00/2	Saddle Clip
26	2901749-00/0	Terminal Block (8-way)
27	343903-00/1	Insulation Piece
28	2901736-00/5	Insulation for terminal block
29	2901743-00/1	Fastening Plate
30	272662-00/8	Screw, 1/4" No.6, for items 29 & 31
31	2901859-00/5	Clamp for armoured sleeve
32	343530-00/2	Connection Cord, 3-core, with 3-blade moulded plug
33	2901841-01/0	Lead, black, switch to terminal block
34	2902649-00/9	Lead, grey, terminal block to fuse
35	2901841-05/0	Lead, blue, terminal block to switch
36	2901824-01/0	Lead, black, switch to thermostat
37	2902650-00/7	Lead, grey, fuse to switch
38	2901841-03/0	Lead, blue, switch to terminal block
39	2901841-02/0	Lead, white, switch to terminal block.
40	2901841-04/0	Lead, red, switch to terminal block
41	2901841-06/0	Lead, black, thermostat to terminal block
42	2901842-00/0	Lead, grey, (switch link)

RM211, RM211B
L.P. GAS EQUIPMENT



L. P. GAS EQUIPMENT

Item No.	Part No.	Description
1	2901604-00/5	Clamp for thermostat capillary
2	2901929-00/6	Spacing Clip
3	2901712-00/6	Angled Top for balanced flue
4	341733-00/4	Screw, Poz. Pan Head, 5/8" No.6, for item 3
5	200246-01/0	Support Wire for flue baffle
6	339202-00/0	Flue Baffle only
7	2901733-00/2	Burner Shield complete
8	290583-00/2	Screw, Poz. Pan Head, 1/4" No.4
9	294 112-00/8	Screw, Rd. Hd., M5 x 10, for burner bracket
10	23857-00/6	Spring Washer for item 9
11	2901764-00/0	Burner
12	169386-00/0	Lock Nut for thermocouple
13	2901860-01/0	Burner Jet (size 4)
14	2901369-00/5	Union Nut, for gas pipe to pressure testing point
15	1732 13-00/0	Olive for gas pipe
16	169380-00/3	Plug Screw for item 18
17	2900703-14/7	Gas Thermostat, Ranco V35, with by-pass size 14
18	173214-00/8	Housing for pressure testing point
19	272562-00/0	Locknut, 1/8" B.S.P.
20	2901156-00/6	Flame Failure Device (less item 33)
21	. 1728 10-00/4	Filter with nipple and nut
22	2901886-00/8	Screw, Poz. Rec. Hd., 9/16" No.6, for gas cock
23	2901885-00/0	Gas Cock
24	2002582-00/1	Protection Tube for gas cock screw
25	2901849-00/6	Locknut for gas cock
26	2900680-00/6	Screw, Cheese head, M4 x 1/4", thermostat to bracket
27	27361 1-00/4	Screw, Rd. Hd., 3/8" No. 8
28	2901831-00/4	Thermostat Bracket
29	29261 1-00/1	Indicator for thermostat settings
30	163382-00/5	Spring Clip for thermostat knob
31	2901183-02/6	Gas Thermostat Knob, complete with clip
32	2901737-00/0	Gas Pipe only
33	2901738-00/0	Thermocouple only
34	341913-14/3	By-pass Screw, size 14, for gas thermostat

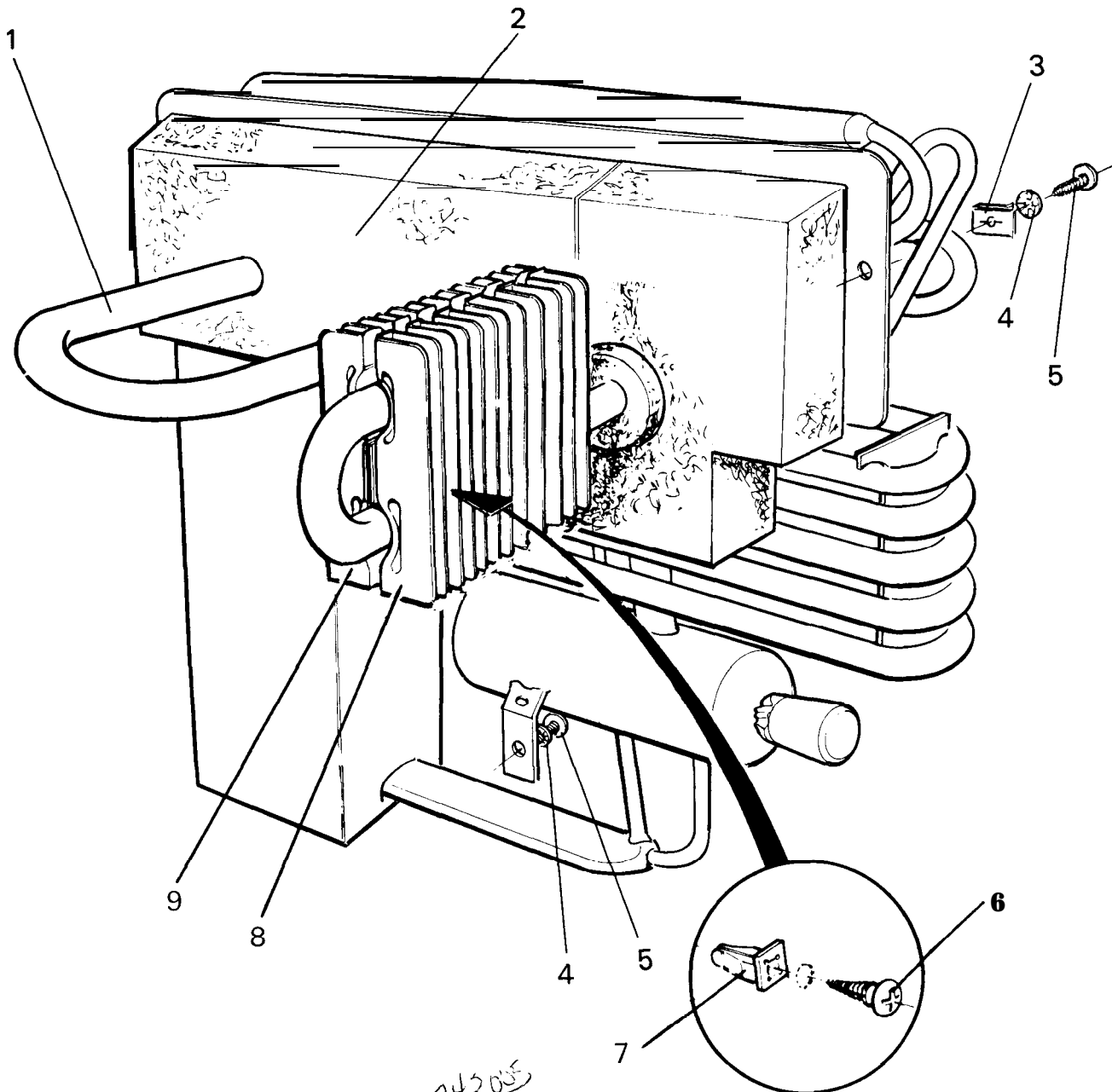
use 01693720
 2 lock nuts
 016938600

For Piezo Igniter, see items 10 and 12 on pages 4 and 5.

* Has been replaced by the following items :-

- 1 2903584-00/7 Union Nipple
- 1 2901676-00/3 Filter Element
- 1 172809-00/6 Union Nut

RM211, RM211B
ABSORPTION COOLING UNIT



Item No.	Part No.	Description
* 1	NLA 9282740-01/0 9282743-01/3	Absorption Cooling Unit, type 274A, for RM211 , " " " 274A3, for RM211B
2	2901657-00/3 2901657-01/1	Set of Window Insulation, RM211 , " " " , RM211B
3	2900493-00/4	Spire Nut
4	290660-00/0	Internal Tooth Lockwasher, 3/16"
5	2900884-00/4	Screw, Rd. Hd., 3/4" No.10
6	7295342-42/7	Screw, 13mm x No.8, for evaporator fins
7	2901750-00/6	Plastic Nut, for evaporator fins
* 8	2901997-00/3	Fins, right-hand section, for evaporator
* 9	2901997-01/1	Fins, left-hand section, for evaporator

* The type 274A3 (RM211B) cooling unit can be used in place of the 274A (RM211) cooling unit if the appropriate window insulation (item 2) is used for the particular model concerned. The 274A unit cannot be used in place of the later 274A3 unit.

* Earlier 274A cooling units had non-removable evaporator fins.